

373-009
Copper



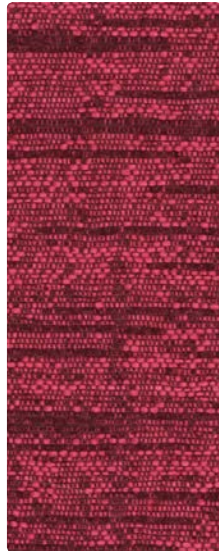
373-024
Mist



373-007
Parchment



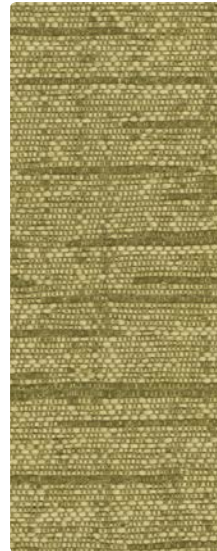
373-017
Alabaster



373-005
Hibiscus



373-014
Cerulean



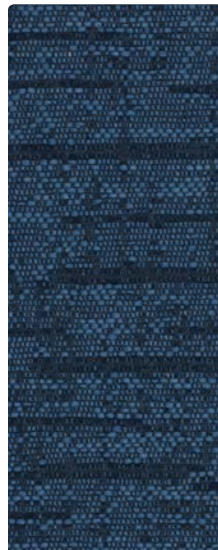
373-003
Jade



373-000
Bark



373-001
Garnet



373-004
Lapis



373-034
Marina



373-006
Shadow

Application
Upholstery Seating

Content
100% Recycled Polyester

Width
54 inches

Abrasion (Wyzenbeek/Cotton Duck)
Passes 51,000 Double Rubs

Finish
None

Reduced Environmental Impact
GREENGUARD Gold Certified



TECHNICAL INFORMATIONContent: **100% Recycled Polyester (65% Pre/35% Post-Consumer)**

Width: 54"

Weight: 10.688 oz./linear yard

Backing: Polyester

Finish: None

Approx. Repeat: 15" H, 12.88" V Non-matching

Directional: Yes

Railroaded: No

PERFORMANCESurface Abrasion: Heavy Duty ASTM D 4157
(Wyzenbeek/Cotton Duck)**Results**

Passes 51,000 Double Rubs

Pilling Resistance ASTM D 3511

Class 5

Colorfastness to Crocking AATCC-8

Dry: Class 4 min / Wet: Class 3 min

Colorfastness to Light AATCC 16

Class 4 min at 40 hours

FLAMMABILITY

California Technical Bulletin 117-2013

NFPA 260/UFAC Class 1

May comply with California Technical Bulletin 133 when combined with appropriate components.

REDUCED ENVIRONMENTAL IMPACT**This product is GREENGUARD Gold Certified for low chemical and particle emissions to UL standard UL 2818 and may contribute to LEED certification. For complete information visit mayerfabrics.com and UL.com/gg.****Eco-System**[®]
Sustainable. Attainable at Mayer Fabrics.The Eco-System icon indicates
100% recycled content.**facts**^{*}
Gold

The Facts icon indicates that a textile has been evaluated based on the requirements of the multi-attribute sustainability standard NSF/ANSI 336 through an independent third-party certification body authorized by the Association for Contract Textiles.

CLEANING INFORMATION

WS: Water/Solvent Cleaner

BC: Bleach Cleanable – 1 part bleach, 9 parts water = 10% bleach, 90% water solution. **Do not clean/disinfect fabric for longer than 10 minutes using the 10% bleach solution. Always rinse promptly with clean water after applying the bleach solution. Failure to do so will void any and all warranties.****ADDITIONAL INFORMATION****Custom Capabilities:** All patterns can be custom colored. Minimum yardage applies.**Digital Swatch Card Color Matching:** Due to color variations on different monitors and color printers, actual swatch colors may vary slightly. Please request a memo sample from Mayer Fabrics to ensure proper color representation.**Specifications:** Specifications are correct at the time of printing. Current specifications are available on our website.This fabric meets or exceeds
these ACT performance guidelines.
*Certification Marks owned by ACT[®]**MAYER**FABRICS