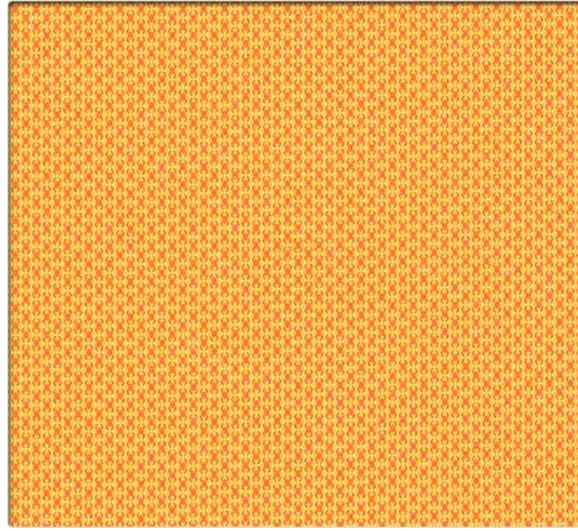
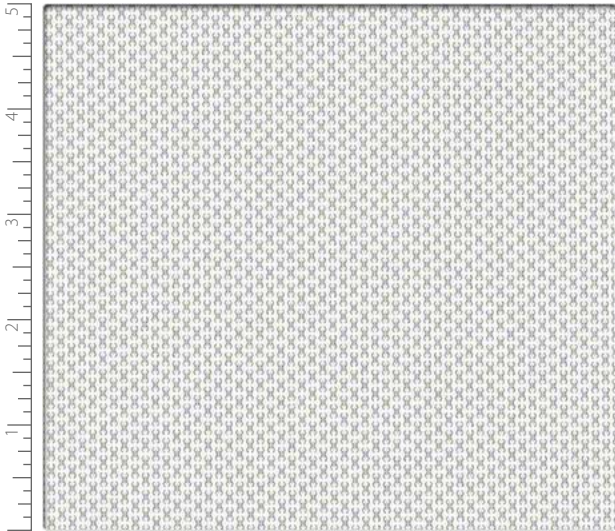


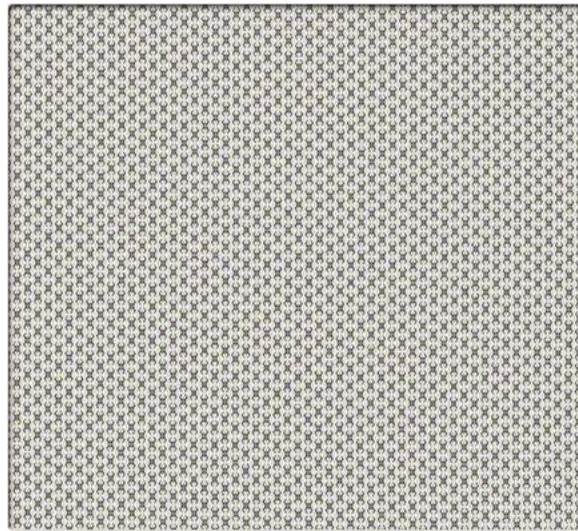
64473 Meringue



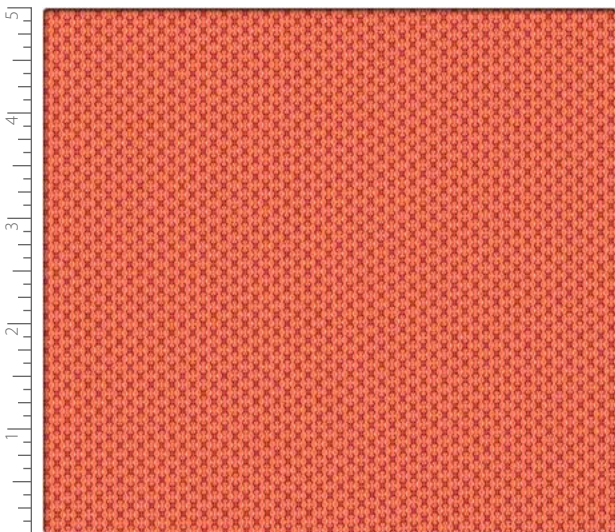
64474 Papaya



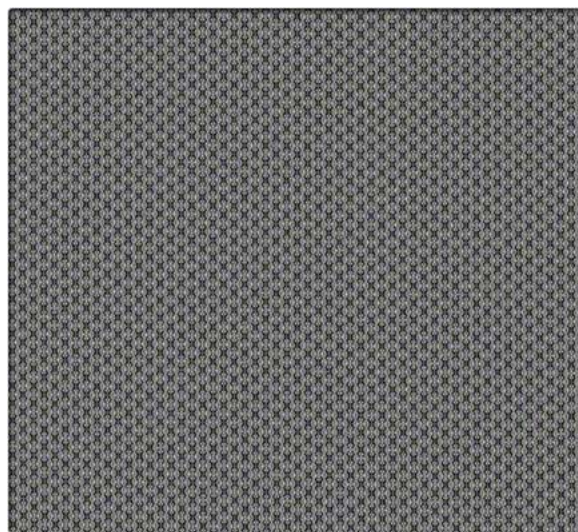
64475 Calcite



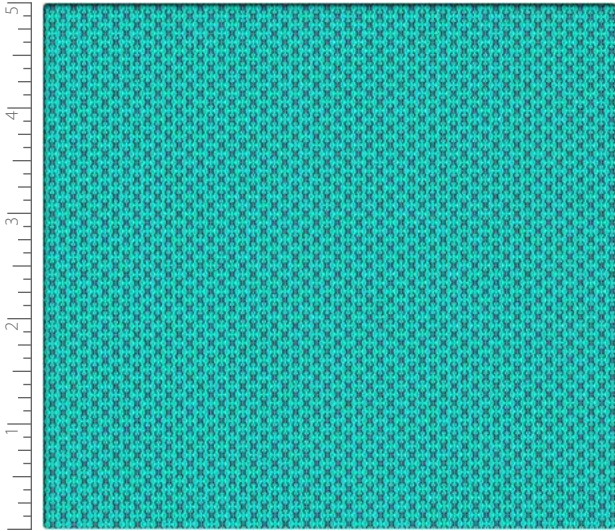
64476 Foil



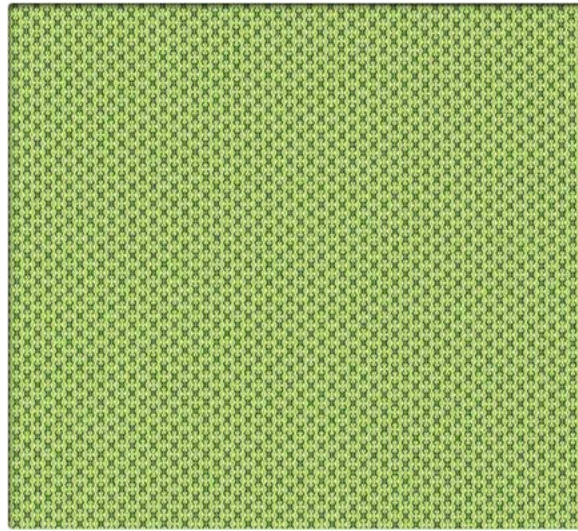
64477 Guava



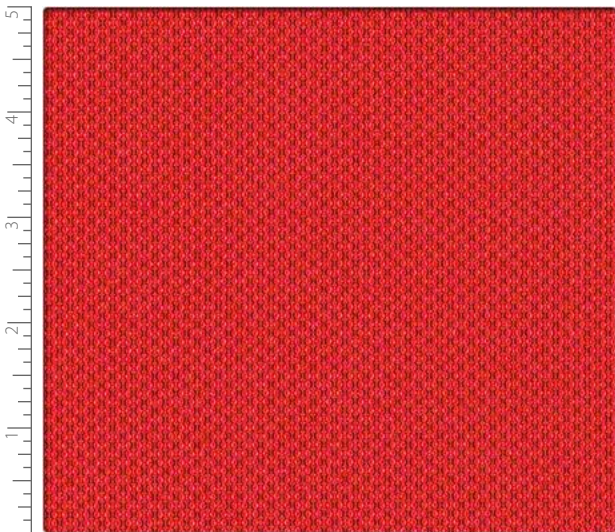
64484 Shale



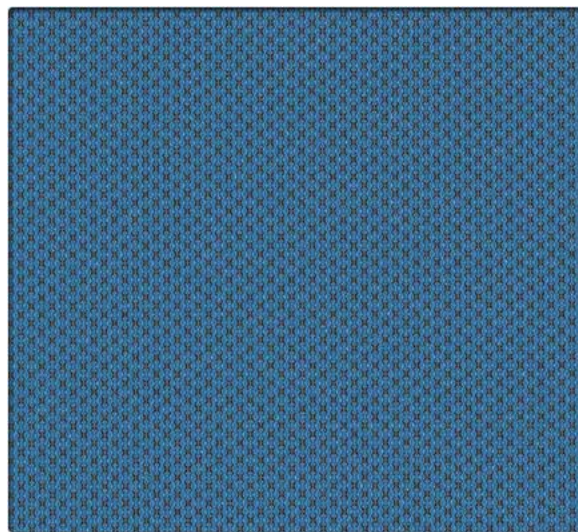
64479 Ionian



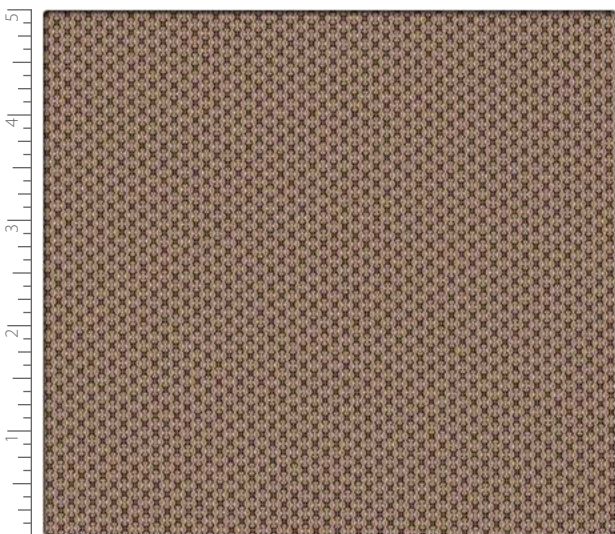
64480 Anjou



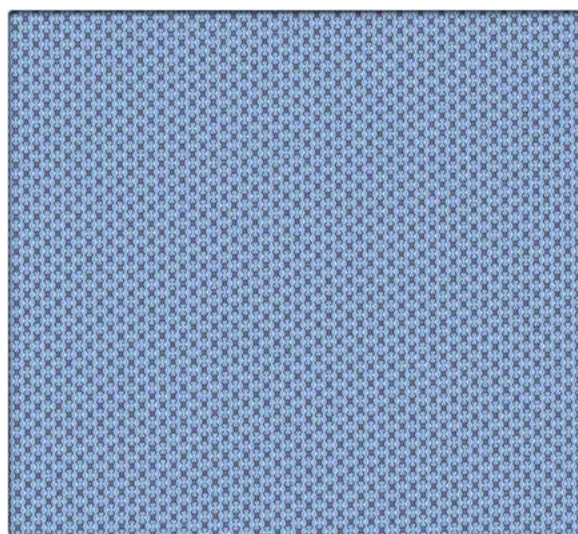
64481 Robust



64482 Cosmos



64483 Lodge



64478 Delft

Refraction

PERFORMANCE OR VERTICAL SURFACE FABRIC

Grade Call for Pricing

Performance Summary

- Enhanced soil + stain resistance
- Enhanced abrasion resistance

Cleaning and Maintenance

Cleaning Code: **(W-S)** For water-based stains use water-based cleaners. For oil-based stains use solvent-based cleaners. We recommend using a professional cleaning service.

For additional cleaning information visit cfstinson.com

For complete specifications visit cfstinson.com

Dye lots may vary slightly.

* This term and any corresponding data refer to the typical performance in the tests indicated and should not be construed to imply the behavior of this or any other material under actual fire conditions.

Specifications



Content	70% Post Consumer Recycled Polyester, 30% Polyester
Finish	Non-PFOA Stain Resistant
Backing	Acrylic
Weight	14.8 oz./lin. yd. ± 1.0 oz.
Width	54 inches
Roll Size	50 yards

Performance Characteristics

Abrasion Resistance ASTM D-4157	Exceeds 100,000 double rubs - heavy duty
Break Strength ASTM D-5034	Warp: 299 lbs. min., Fill: 219 lbs. min.
Tear Strength ASTM D-2261	Warp: 18.8 lbs. min., Fill: 17.6 lbs. min.
Seam Slippage ASTM D-4034	Warp: 128 lbs. min., Fill: 97 lbs. min.
Colorfastness to Light AATCC-16A	40 Hours, Class 4.5
Crocking AATCC-8	Dry: Class 4.0, Wet: Class 4.0

Flammability*

California Technical Bulletin 117-2013 Section 1	Passed
UFAC	Class 1
NFPA 260	Class 1
ASTM E-84 (Unadhered)	Class A or 1

May contribute to compliance with California Technical Bulletin 133 when used in conjunction with other suitable components.

This product is produced using 70% recycled fiber.



2420 Long Lake Road
Roseville, MN 55113-7133

Phone: 651-361-7500
Phone: 1-800-MINNCOR (646-6267)

www.minncor.com

To place an order for a sample,
please contact MINNCOR at 651-361-7500
or email customer-service@minncor.com



C.F. Stinson, LLC
2849 Product Drive
Rochester Hills, MI 48309

P 800 841 6279
F 248 299 3884

cfstinson.com