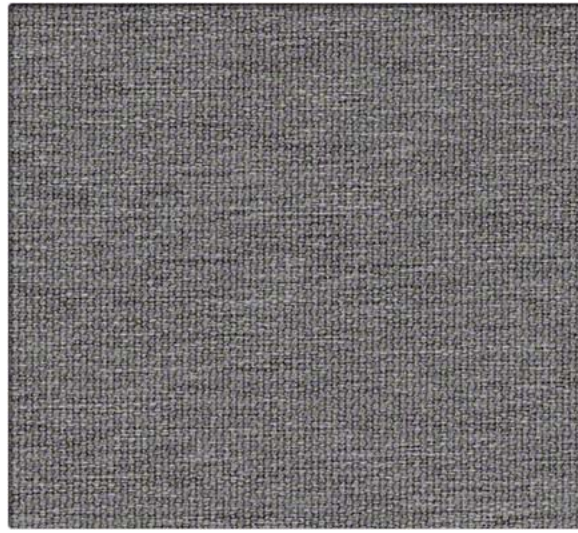
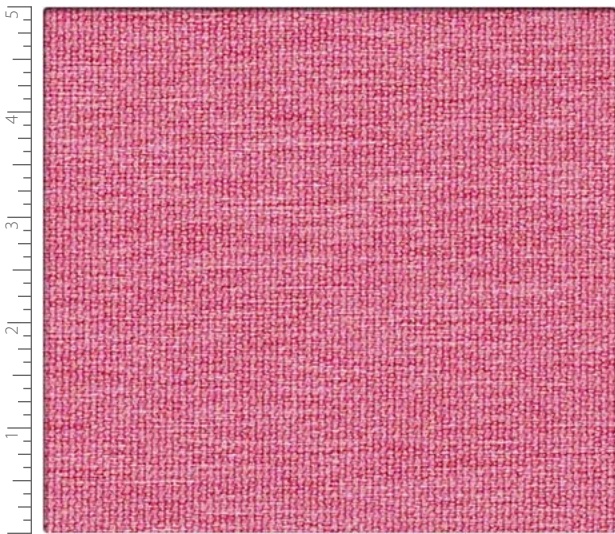


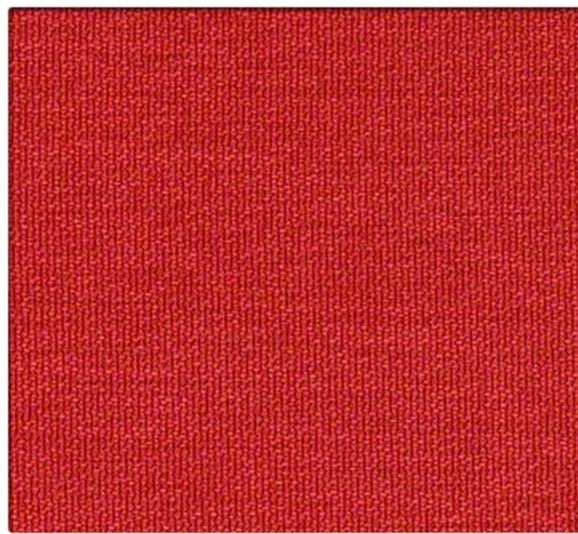
64490 Cirrus



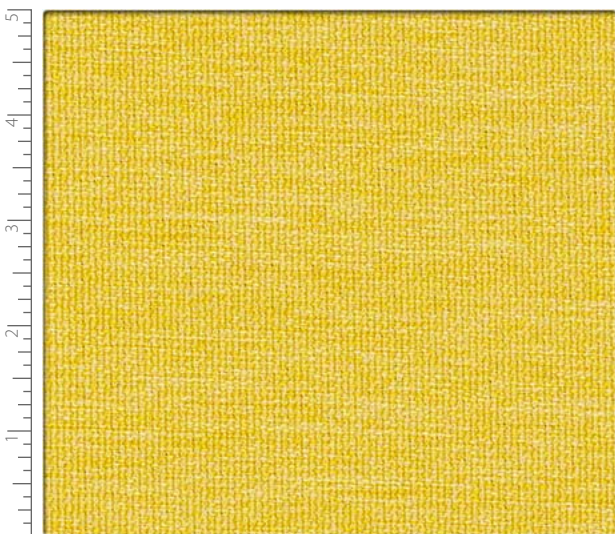
64505 Magnet



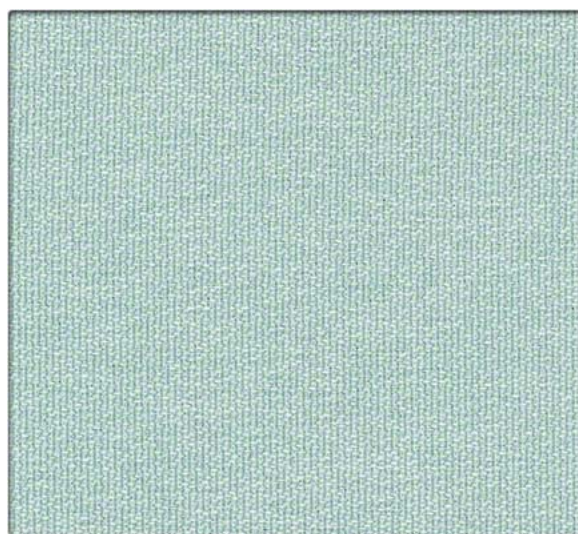
64492 Peony



64493 Poppy

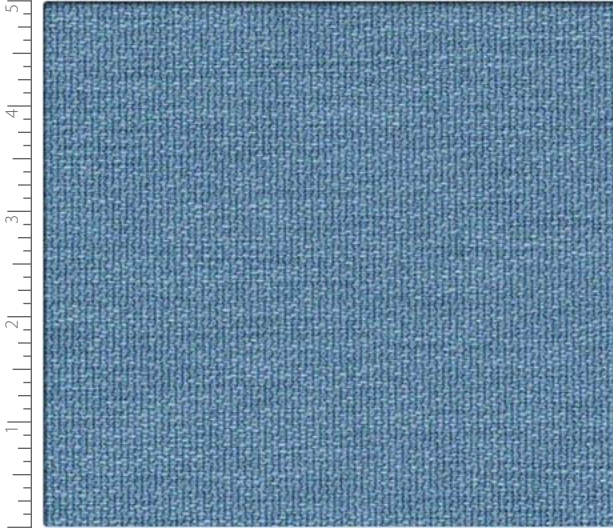


64494 Oro



64495 Seaglass

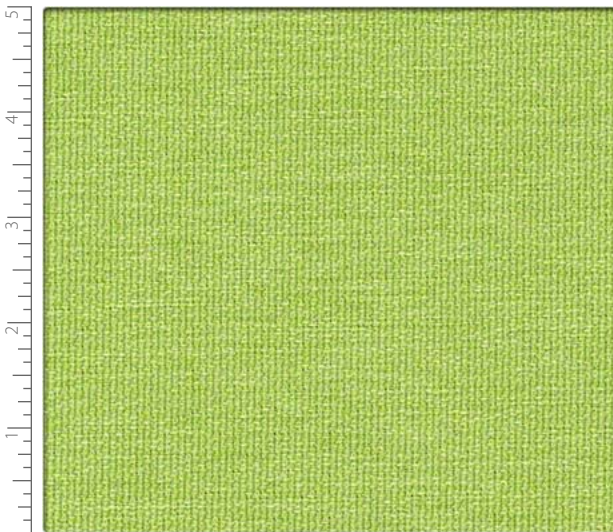




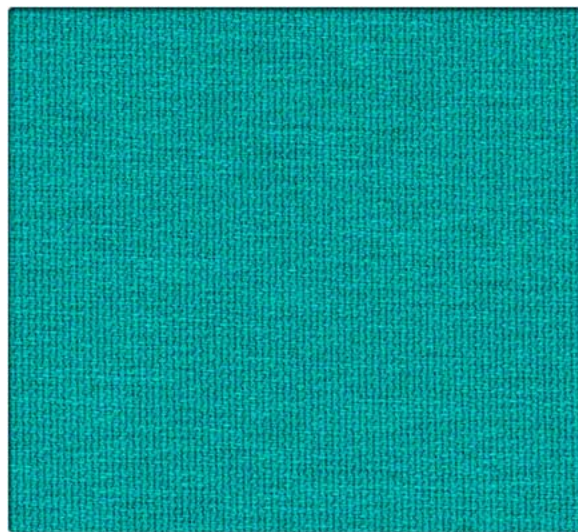
64496 Nantucket



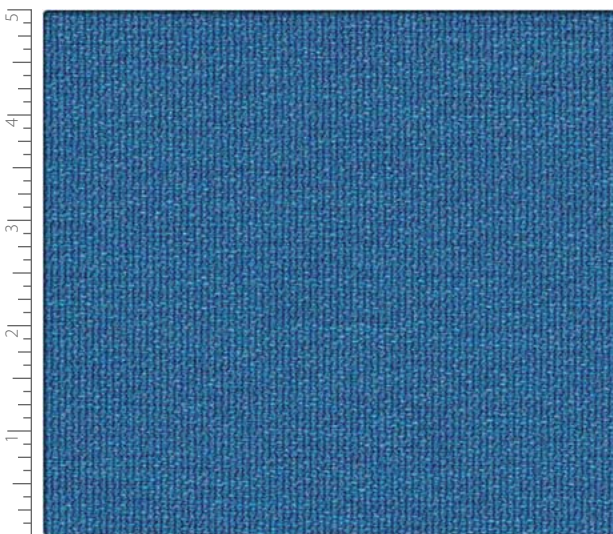
64497 Aqueduct



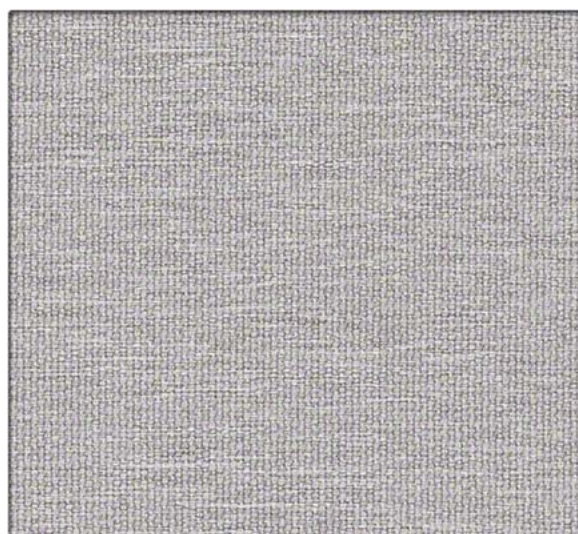
64498 Margarita



64499 Tahiti

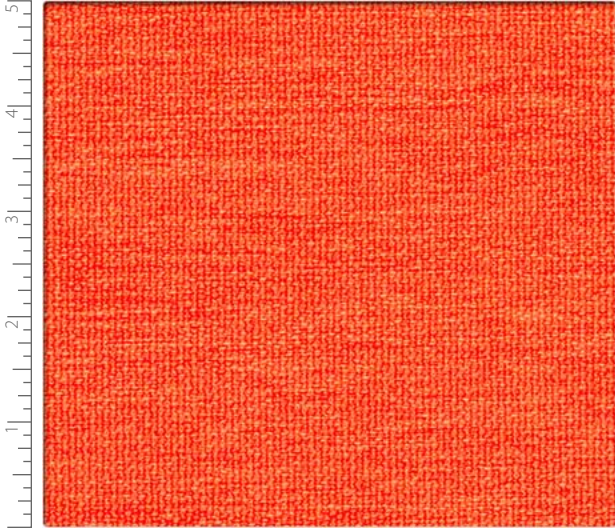


64500 Blue Agate

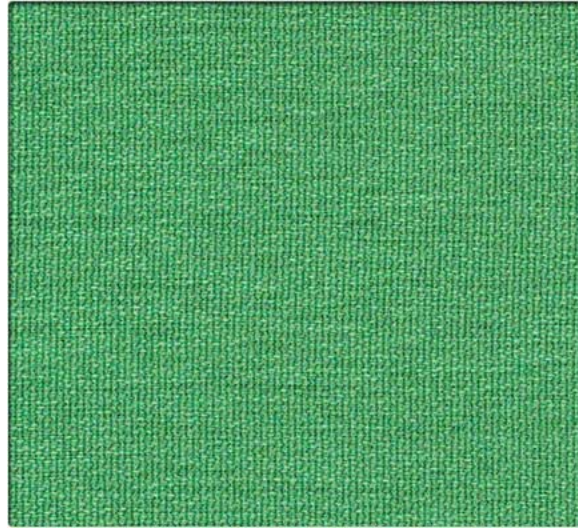


64501 Limestone

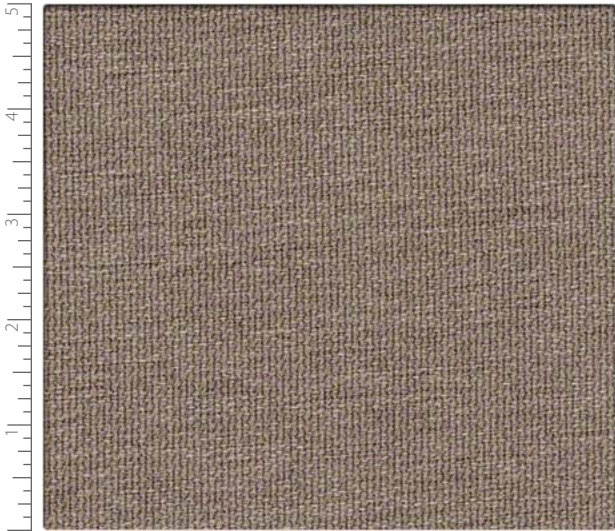




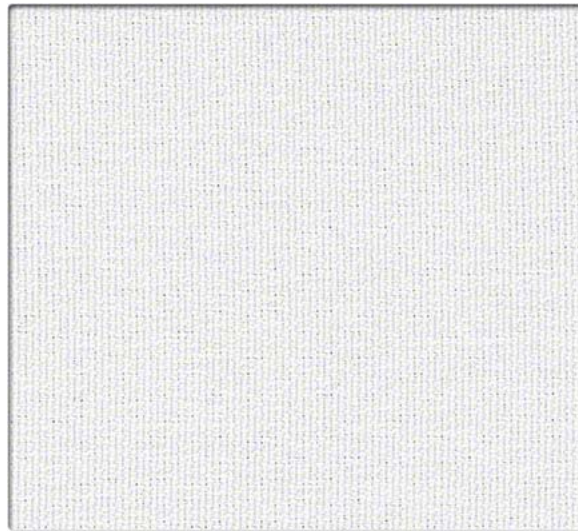
64502 Clementine



64503 Valley



64504 Mushroom



64491 Frost

# Shift

## PERFORMANCE OR VERTICAL SURFACE FABRIC

Grade Call for Pricing

### Performance Summary

- Enhanced soil + stain resistance
- Enhanced abrasion resistance

### Cleaning and Maintenance

Cleaning Code: **(W-S)** For water-based stains use water-based cleaners. For oil-based stains use solvent-based cleaners. We recommend using a professional cleaning service.

For additional cleaning information visit [cfstinson.com](http://cfstinson.com)

For complete specifications visit [cfstinson.com](http://cfstinson.com)

Dye lots may vary slightly.

\* This term and any corresponding data refer to the typical performance in the tests indicated and should not be construed to imply the behavior of this or any other material under actual fire conditions.

### Specifications



Content	75% Post Consumer Recycled Polyester, 25% Polyester
Finish	Non-PFOA Stain Resistant
Backing	Acrylic
Weight	14.8 oz./lin. yd. ± 1.0 oz.
Width	54 inches
Roll Size	55 yards

### Performance Characteristics

Abrasion Resistance ASTM D-4157	Exceeds 100,000 double rubs - heavy duty
Break Strength ASTM D-5034	Warp: 110 lbs. min., Fill: 115 lbs. min.
Tear Strength ASTM D-2261	Warp: 45 lbs. min., Fill: 45 lbs. min.
Seam Slippage ASTM D-4034	Warp: 67 lbs. min., Fill: 68 lbs. min.
Brush Pilling ASTM D-3511	Class 4.0 min.
Colorfastness to Light AATCC-16A	40 Hours, Class 4.5
Crocking AATCC-8	Dry: Class 4.0, Wet: Class 4.0

### Flammability\*

California Technical Bulletin 117-2013 Section 1	Passed
UFAC	Class 1
NFPA 260	Class 1
ASTM E-84 (Unadhered)	Class A or 1

May contribute to compliance with California Technical Bulletin 133 when used in conjunction with other suitable components.

This product is produced using 75% recycled fiber.



Shift is an Underwriters Laboratory Recognized Component. Additional testing is not required on approved panel systems from participating manufacturers or remanufacturers.



2420 Long Lake Road  
Roseville, MN 55113-7133

Phone: 651-361-7500  
Phone: 1-800-MINNCOR (646-6267)

[www.minncor.com](http://www.minncor.com)

To place an order for a sample,  
please contact MINNCOR at 651-361-7500  
or email [customer-service@minncor.com](mailto:customer-service@minncor.com)



C.F. Stinson, LLC  
2849 Product Drive  
Rochester Hills, MI 48309

P 800 841 6279  
F 248 299 3884

[cfstinson.com](http://cfstinson.com)