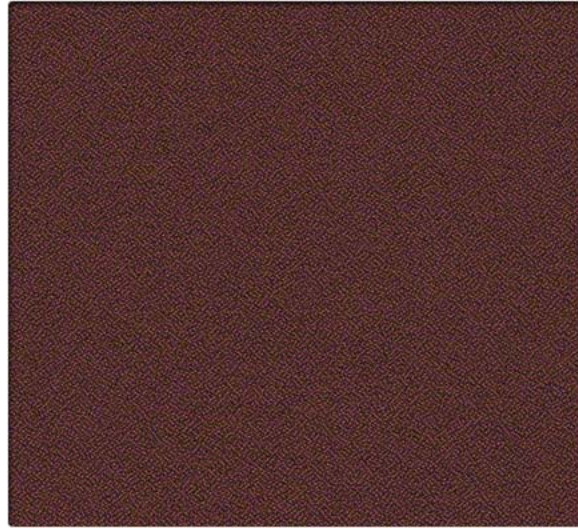
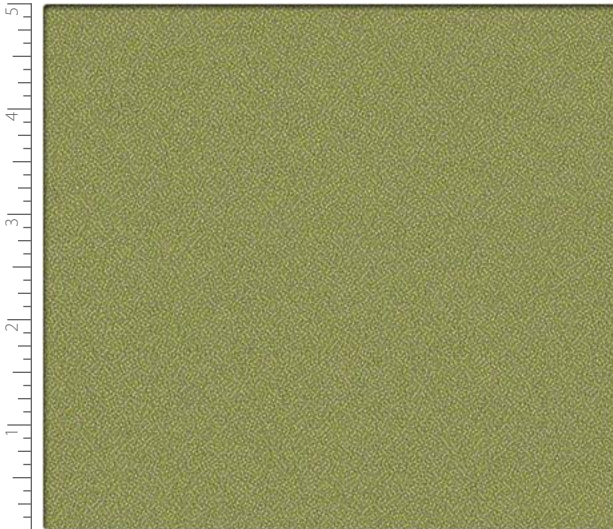


6005 Dark Green



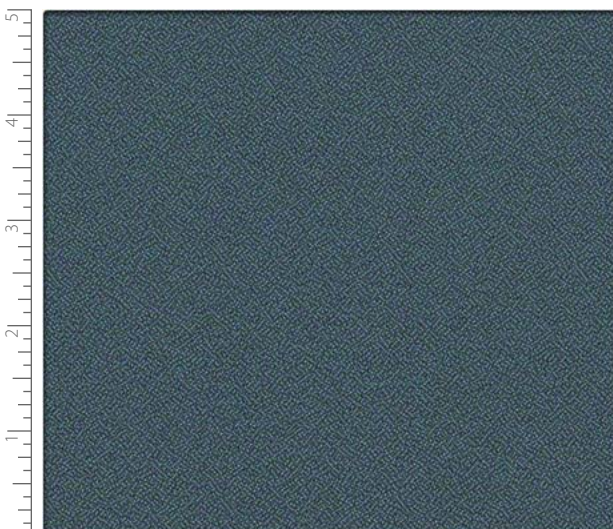
6007 Cordovan



6002 Apple



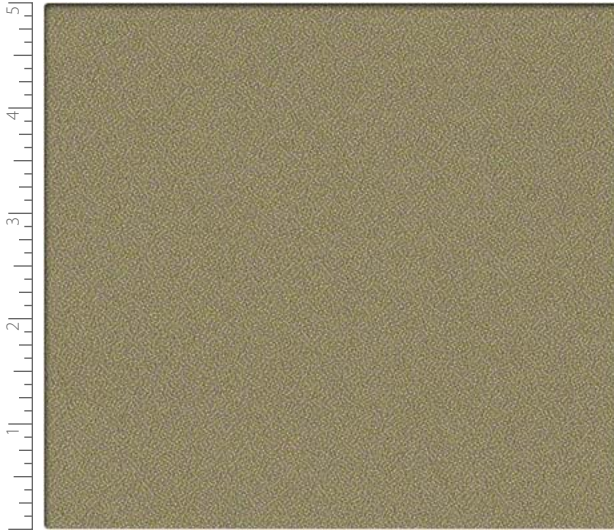
6010 Estate Blue



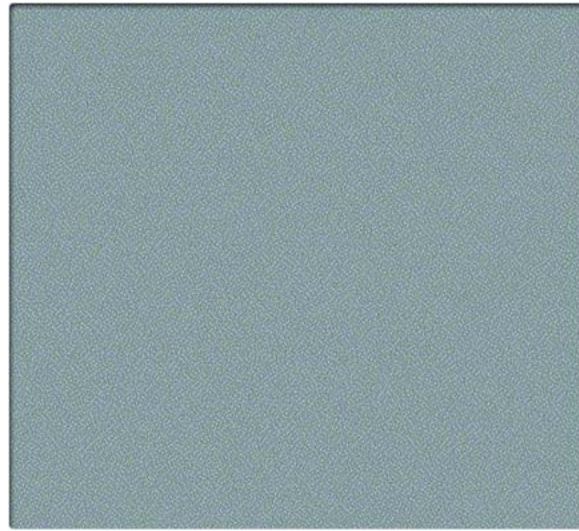
5996 Bluestone



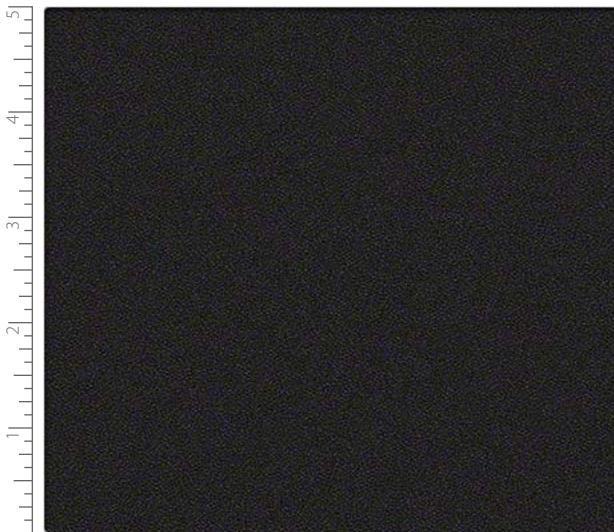
6006 Palm



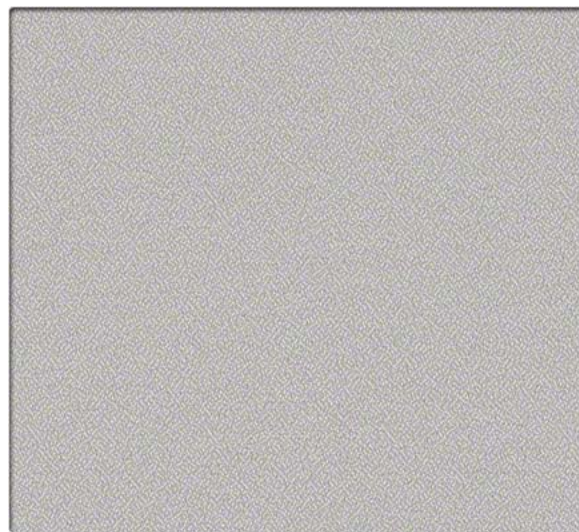
6016 Taupe



6000 Eventide



6011 Phantom



6015 Mirage

Vision

PERFORMANCE FABRIC

Grade Standard

Performance Summary

- Enhanced abrasion resistance

Cleaning and Maintenance

Cleaning Code: **(W-S)** For water-based stains use water-based cleaners. For oil-based stains use solvent-based cleaners. We recommend using a professional cleaning service.

For additional cleaning information visit cfstinson.com

For complete specifications visit cfstinson.com

Dye lots may vary slightly.

* This term and any corresponding data refer to the typical performance in the tests indicated and should not be construed to imply the behavior of this or any other material under actual fire conditions.

** Multiple factors affect fabric durability and appearance retention, including end-user application and proper maintenance. Wyzenbeek results above 100,000 double rubs have not been shown to be an indicator of increased lifespan.

Specifications



Content	100% Post-Industrial Recycled Polyester
Backing	None
Weight	9.9 oz./lin. yd. ± 1.0 oz.
Width	54 inches
Roll Size	60 yards

Performance Characteristics

Abrasion Resistance** ASTM D-4157	Exceeds 100,000 double rubs - heavy duty
Break Strength ASTM D-5034	Warp: 210 lbs. min., Fill: 176 lbs. min.
Seam Slippage ASTM D-4034	Warp: 60.5 lbs. min., Fill: 56.8 lbs. min.
Brush Pilling ASTM D-3511	Class 5.0 min.
Colorfastness to Light AATCC-16	40 Hours, Class 5.0
Crocking AATCC-8	Dry: Class 5.0, Wet: Class 5.0

Flammability*

California 191-53 Technical Bulletin 117, Section E	Passed
UFAC	Class 1
May contribute to compliance with California Technical Bulletin 133 when used in conjunction with other suitable components.	



2420 Long Lake Road
Roseville, MN 55113-7133

Phone: 651-361-7500
Phone: 1-800-MINNCOR (646-6267)

www.minncor.com

To place an order for a sample,
please contact MINNCOR at 651-361-7500
or email customer-service@minncor.com



C.F. Stinson, LLC
2849 Product Drive
Rochester Hills, MI 48309

P 800 841 6279
F 248 299 3884

cfstinson.com